



Vibracoustic
Aftermarket

Electrical Switchable Hydro Mounts

Motor Mounts

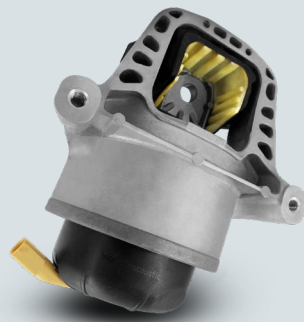
Motor Mounts compensate high vibrations that can result in certain driving modes by dampening the vibrations. Besides this, these Mounts supporting drive torques and isolating noise during start-up. This helps prevent booming noises and load change shocks, while a hydraulic damping system can reduce body and driveline vibrations.

- Vibracoustic Electrical Switchable Hydro Mounts for engine support enable the excitation of different driving modes like idle speed or driving. This allows to choose the best characteristic for each mode.
- For a more comfortable or more dynamic drive, the individual chambers of our Vibracoustic Electrical Switchable Hydro Mount can be set smart and individually to two different damping levels.
- The Vibracoustic patented concept with a single housing saves resources and reduces weight, leading to lower fuel consumption. At the same time, it leads to higher reliability and safety.
- The original quality and robustness of Vibracoustic Switchable Hydro Mounts ensure a longer vehicle service life, less downtime and lower operating costs due to reduced replacement intervals.

Dampened vibrations prevent booming noises and load change shocks

Flexible options for best characteristics in different driving modes

Individual chambers for two different damping levels



Patented single-housing concept saves resources and reduces weight

Hydraulic damping is precisely managed by electric controller

Robustness of original quality components ensure cost saving



Vibracoustic Aftermarket GmbH
Hoehnerweg 2-4 | 69469 Weinheim | Germany



www.vibracoustic-aftermarket.com
aftermarket@vibracoustic.com