



Commercial Vehicles Motor Mounts

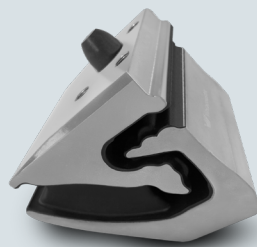
Motor Mounts are essential for powerful Commercial Vehicle motors. They isolate motor vibrations, ensure stability, and dampen road disturbances to support a reliable and safe transportation of goods while increasing driving comfort. Vibracoustic mounts stand out by enduring high loads and torques, and countering vibrations from motors and roads. They offer robust solutions for efficient, comfortable, and reliable transportation, including electric trucks.

Motor Mounts

- Vibracoustic Motor Mounts use a specially developed natural rubber compound, which ensures high temperature resistance, durability, and effective vibration isolation for a long-lasting performance under different conditions.
- The rubber design is aligned to the motor of each vehicle application. This results in a particularly low roll natural frequency. Such a design feature ensures superior vibration control performance, enhancing driving comfort.
- The inclusion of stoppers in the rubber design reduces the complexity of the engine mount system and therefore the costs. Additional components which restrict only the deflection of the mount, can be avoided. The integrated stopper protects the main rubber spring from harmful peak tensile loads, ensuring a consistent operational stability of the mount.
- The use of extruded aluminum metals in the mount's construction ensures a balance between cost-efficiency and weight. This ensures the mount is space-optimized and durable, contributing to the vehicle's overall performance.
- The mount comes with a positioning pin, which facilitates easy assembly. This feature enhances the installation process, ensuring that the mount is assembled correctly and efficiently.

Specific angle of the main rubber spring for optimum vibration control performance

Robust and lightweight extruded aluminium



Positioning pin for easy assembly

Tension and compression stoppers protecting main rubber spring from tensile loads

